

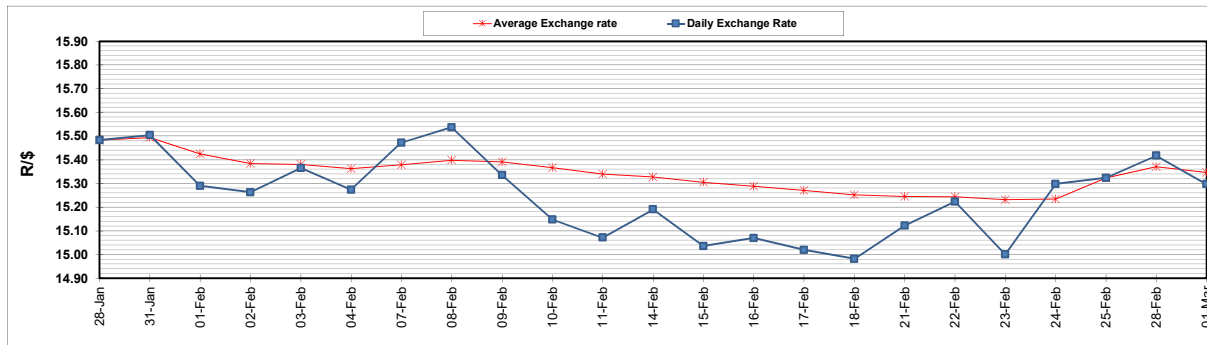
	PETROL 95 ULP	PETROL 93 ULP & LRP	DIESEL 0.05%	DIESEL 0.005%	ILL. PAR.
GAUTENG PUMP PRICE (SA c/l) AS FROM 02/03/2022	2,160.000	2,135.000	-	-	-
WHOLESALE PRICE (SA c/l) AS FROM 02/03/2022	-	-	1,948.880	1,955.280	1,318.688
SINGLE NATIONAL MAXIMUM RETAIL PRICE	-	-	-	-	1,690.000
BASIC FUEL PRICE - 01/03/2022 (SA c/l)	1,188.198	1,169.920	1,209.454	1,218.893	1,193.958
PRESS RELEASE CONTRIBUTION TO BFP 25/02/2022 - 01/03/2022 (SA c/l)	969.630	954.630	978.630	981.030	976.128
UNIT OVER/(UNDER) RECOVERY - 01/03/2022 (SA c/l)	(218.568)	(215.290)	(230.824)	(237.863)	(217.830)
AVERAGE BASIC FUEL PRICE 25/02/2022 - 01/03/2022	1,166.051	1,147.281	1,170.420	1,177.054	1,155.591
AVERAGE UNIT OVER/(UNDER) RECOVERY 25/02/2022 - 01/03/2022	(196.421)	(192.651)	(191.790)	(196.024)	(179.463)

ANALYSIS MOVEMENT OF AVERAGE OVER/(UNDER) RECOVERY

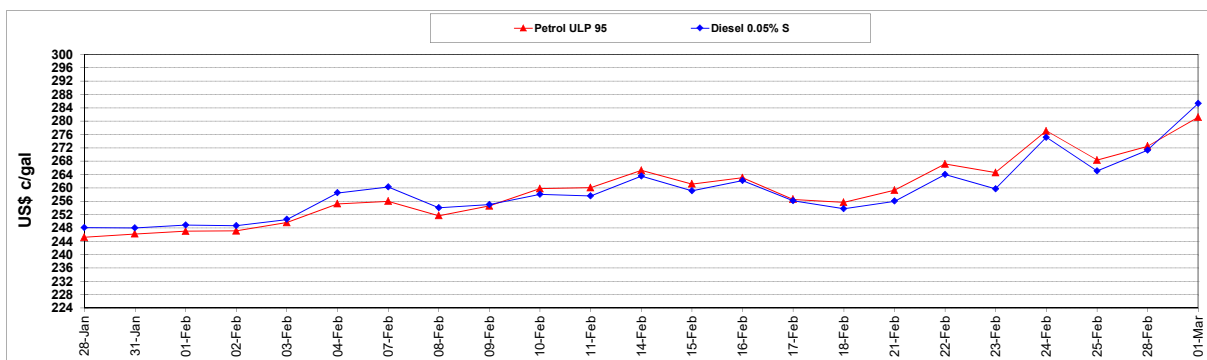
	PETROL 95	PETROL 93	DIESEL 0.05%	DIESEL 0.005%	ILL. PAR.
- MOVEMENT IN INTERNATIONAL PRODUCT PRICES	(187.926)	(184.293)	(183.264)	(187.449)	(171.044)
- MOVEMENT IN EXCHANGE RATE	(8.495)	(8.358)	(8.527)	(8.575)	(8.419)
AVERAGE UNIT OVER/(UNDER) RECOVERY 25/02/2022 - 01/03/2022	(196.421)	(192.651)	(191.790)	(196.024)	(179.463)

R/\$ EXCHANGE RATE - (R/\$15.2973 - 01/03/2022)

EXCHANGE RATE USED IN BASIC FUEL PRICE



INTERNATIONAL PRODUCT PRICES OF BASKET USED IN BASIC FUEL PRICE



BASIC FUEL PRICE IN SA CENTS PER LITRE

